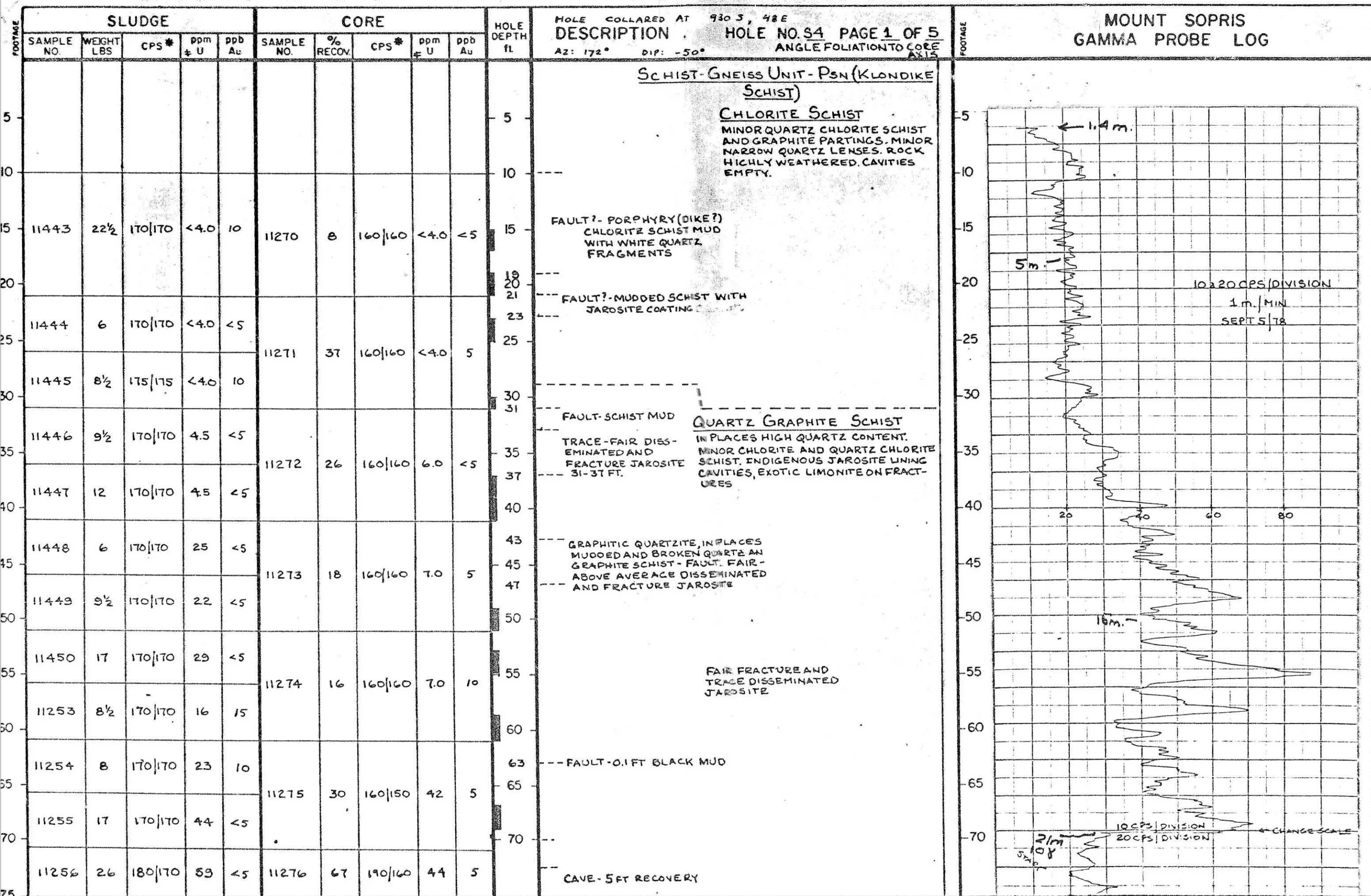


## DRILL HOLE LOG

## UKON JOINT VENTURE

## SURPRIZE CLAIMS, YUKON 1978



\* - CPS - 100/100 - COUNTS PER SECOND OVER BACKGROUND USING SCINTREX BGS ISL (434 cc CRYSTAL) SCINTILLOMETER  
 † U LESS THAN 4 DETECTION LIMIT DUE TO FLUORESCENCE QUENCHING CAUSED BY HIGH CONCENTRATION OF INTERFERING METALS



FOOTAGE	SLUDGE					CORE					HOLE DEPTH ft	DESCRIPTION	HOLE NO. S4 PAGE 2 OF 5 ANGLE FOLIATION TO CORE AX.	FOOTAGE	MOUNT SOPRIS GAMMA PROBE LOG
	SAMPLE NO.	WEIGHT LBS	CPS *	ppm U	ppb Au	SAMPLE NO.	% RECOV.	CPS *	ppm U	ppb Au					
80	11257	6	170/170	56	<5	11277	36	170/170	38	10	79	QUARTZ GRAPHITE SCHIST SEE PAGE 1 FOR DESCRIPTION		80	
											80	FAULT - 0.5 FT MUD		80	
											81	FAULT - 0.2 FT MUD		81	
85	11258	14	170/165	72	5	11278	20	160/160	41	<5	83	ABOVE AVERAGE DISSEMINATED AND FRACTURE JAROSITE		85	
											85			85	
90	11259	12	180/170	77	5		0				90			90	
											93			93	
95	11260	6	180/170	71	<5	11351	25	160/160	4.0	15	95	ABOVE AVERAGE DISSEMINATED AND FRACTURE JAROSITE. TRACE PYRITE.		95	
											97			97	
100	11261	17	180/165	63	<5		0				100			100	
											103			103	
105	11262	6	180/170	38	<5	11353	25	160/160	8.5	<5	105	MODERATE - ABOVE AVERAGE DISSEMINATED AND FRACTURE INDIGENOUS JAROSITE. CAVITIES		105	
											107	MASSIVE		107	
110	11263	8	165/165	31	<5		0				110			110	
											111			111	
115	11264	13	170/170	32	5	11355	33	160/160	7.5	<5	115	FAIR DISSEMINATED AND FRACTURE JAROSITE, CAVITIES MASSIVE JAROSITE TRACE PYRITE.		115	
											117			117	
120	11265	11	170/170	31	<5						120			120	
						11356	4	160/160	4.0	<5	123			120	
125	11266	7	170/170	13	<5						125	CHLORITIC QUARTZITE IN PLACES GRAPHITIC, MINOR NARROW WHITE QUARTZ LENSES WITH OPEN UNFILLED FRACTURES.		125	
											130			125	
130	11267	7	170/170	14	<5	11357	15	160/160	2.5	<5	130			130	
							0				135	MODERATE - ABOVE AVERAGE DISSEMINATED AND FRACTURE JAROSITE, - IN PLACES MASSIVE LINING. PYRITE TRACE TO FAIR		130	
135	11268	6½	175/160	29	<5						135			135	
											140			140	
140	11269	4	160/160	20	5	11358	33	160/160	23	<5	140			140	
							0				145			140	
145	11279	4	155/150	32	<5	11359	25	160/160	5.0	<5	145			145	
														145	
150	11280	5½	150/150	33	<5		0								



# DRILL HOLE LOG

# UKON JOINT VENTURE

# SURPRIZE CLAIMS, YUKON 1978

FOOTAGE	SLUDGE					CORE					HOLE DEPTH ft.	DESCRIPTION	HOLE NO. 54 PAGE 3 OF 5 ANGLE FOLIATION TO CORE AXIS	FOOTAGE	MOUNT SOPRIS GAMMA PROBE LOG	
	SAMPLE NO.	WEIGHT LBS	CPS*	ppm U	ppb Au	SAMPLE NO.	% RECOV.	CPS*	ppm U	ppb Au						
	11281	7 3/4	150/150	37	5		0									
155											155					
	11282	14	150/150	20	<5	11360	13	160/160	5.0	<5						
160											159	--- TRACE MALACHITE	FAIR DISSEMINATED AN FRACTURE JAROSITE TRACE PYRITE			
	11283	5 1/2	150/150	24	<5	11361	40	160/160	8.5	5						
165							0				163					
	11284	7 1/2	150/150	9.0	<5						165					
170						11362	30	150/150	8.5	10						
	11285	5 1/2	160/150	20	<5						170	--- FAULT - 0.1 FT MUD	LOW DISSEMINATED AND FRACTURE JAROSITE, INTENSE IN GRAPHITE SCHIST BANDS			
175						11363	63	150/150	8.5	35						
	11286	6 1/2	150/150	29	<5		0				173	--- FAULT - MUD				
180											175	--- BOTTOM CONTACT OF WEATHERED ZONE ----				
	11287	7	170/170	29	<5	11364	15	150/150	6.5	<5						
185						11365	20	150/150	50	<5						
	11288	6	175/170	18							180					
190						11366	30	150/150	20							
	11289	11	170/170	6.5							185					
195						11367	60	150/150	0.5							
	11290	10 1/2	170/165	26							190					
200						11368	42	150/150	1.0							
	11291	12	170/170	29							195					
205						11369	45	160/160	1.0							
	11292	8 1/2	165/160	30							200					
210						11370	35	160/160	<0.5							
	11293	10 1/2	180/170	24			0				205					
215						11371	33	160/160	<0.5							
	11294	15 1/2	170/170	34			0				210	WEAK FRACTURING WEAK WEATHERING				
220											215					
	11295	5 1/2	175/170	43							220	CORE BROKEN AND FRACTURED FAIR DISSEMINATED AND FRACTURE JAROSITE, WEAK CLAY				
225						11372	20	165/160	<0.5							
							0									

\* - CPS - 120/100 - COUNTS PER SECOND OVER BACKGROUND USING SCINTREX BGS ISL (43.4 cc CRYSTAL) SCINTILLOMETER

# DRILL HOLE LOG

# UKON JOINT VENTURE

# SURPRIZE CLAIMS, YUKON 1978

FOOTAGE	SLUDGE					CORE					HOLE DEPTH ft.	DESCRIPTION	HOLE NO. <u>54</u> PAGE <u>5</u> OF <u>5</u> ANGLE FOLIATION TO CORE AXIS	FOOTAGE	MOUNT SOPRIS GAMMA PROBE LOG
	SAMPLE NO.	WEIGHT LBS	CPS *	ppm U	ppb Au	SAMPLE NO.	% RECOV.	CPS *	ppm U	ppb Au					
	A1761	25	155/150	22		11387		220/220	<0.5			WHITE QUARTZ- PARTINGS OF GRAPHITE SCHIST	QUARTZ GRAPHITE SCHIST SEE PAGE 4 FOR DESCRIPTION		
305											305	---			
	A1762	11	150/150	20		11388		240/220	1.5						
						CAVE 11389		220/220	32						
310						11390		220/220	<0.5		310	---			
											311	---			
												END OF HOLE-ABANDONED DUE TO CAVE			
												CAVING REQUIRED REAMING FROM 69' TO 75', 70' TO 98', 135' TO 175', 179' TO 259'. CORE BARREL LOST IN HOLE AT 311', TRIED TO REAM AND RODS FILLED WITH SAND.			



## DRILL HOLE LOG

## UKON JOINT VENTURE

## SURPRIZE CLAIMS, YUKON 1978

FOOTAGE	SLUDGE					CORE					HOLE DEPTH ft	DESCRIPTION	HOLE NO. 54 PAGE 4 OF 5 ANGLE FOLIATION TO CORE AXIS	FOOTAGE	MOUNT SOPRIS GAMMA PROBE LOG	
	SAMPLE NO.	WEIGHT LBS	CPS *	ppm U	ppb Au	SAMPLE NO.	% RECOV	CPS *	ppm U	ppb Au						
	11296	3½	170/170	23		11373	30	160/160	<0.5		228	---	CHLORITIC QUARTZITE SEE PAGE 3 FOR DESCRIPTION.	75		
230											230	---	TRACES OF MALACHITE ALONG FRACTURES AND CHALCOPYRITE IN QUARTZ VEIN	15	230	
	11297	2	150/150	7.5		11374	0				231	---				
235						11374	15	160/160	<0.5		235	---	FAULT-HIGHLY BROKEN, GRAPHITIC CORE BROKEN-FRACTURED FAIR DISSEMINATED AND FRACTURE JAROSITE, WEAK CLAY		235	
	11298	2	150/150	6.5		11375	15	160/160	<0.5							
240							0				240				RODS FILLED WITH SAND	
	11299	2	150/150	6.5												
245											245					
	11300	4	150/150	22		11376	48	160/160	31		247	---		10		
250											250		CHLORITE QUARTZ SCHIST RARELY GRAPHITIC, INCREASING QUARTZ TOWARDS BOTTOM CONTACT, FAIR COARSE AND VERY FINE GRAIN DISSEMINATED PYRITE, OCCASIONAL VEINLET OF PYRITE IN CLEAR QUARTZ.		250	
	A1751	3	150/150	16		11377	33	155/155	<0.5		255				255	
255						11378	35	170/170	<0.5							
	A1752	9½	165/160	13		CAVE 11379	9.3 FT	170/170	24		260				260	
260											260					
	A1753	12½	160/160	14		11380	64	170/170	<0.5		263	---	INCREASING QUARTZ		265	
265											265					
	A1754	8	160/160	18		11381	50	160/160	<0.5							
270											270				270	
	A1755	8½	160/160	16		11382	20	160/160	<0.5							
275							0				275				275	
	A1756	8½	160/160	21												
280						11383	13	160/160	<0.5		280				280	
	A1757	7½	160/160	23			0									
285											285				285	
	A1758	20½	160/160	24		11384	60	170/170	<0.5		287	---	FAULT-MUD			
290											288	---				
	A1759	18	170/160	25							290	---	FAULT-MUD, CORE BROKEN, HIGHLY GRAPHITIC		290	
295						11385	60	170/170	<0.5		295	---	FAULT-MUD		295	
	A1760	22½	165/160	25							297.5	---	FAULT-0.5 FT. BROKEN QUARTZ AND GOUGE			
						11386	76	220/220	<0.5		299	---	FAULT-0.1 FT GOUGE			

\* - CPS - 120/100 - COUNTS PER SECOND OVER BACKGROUND USING SCINTREX BGS ISL (43.4 cc CRYSTAL) SCINTILLOMETER